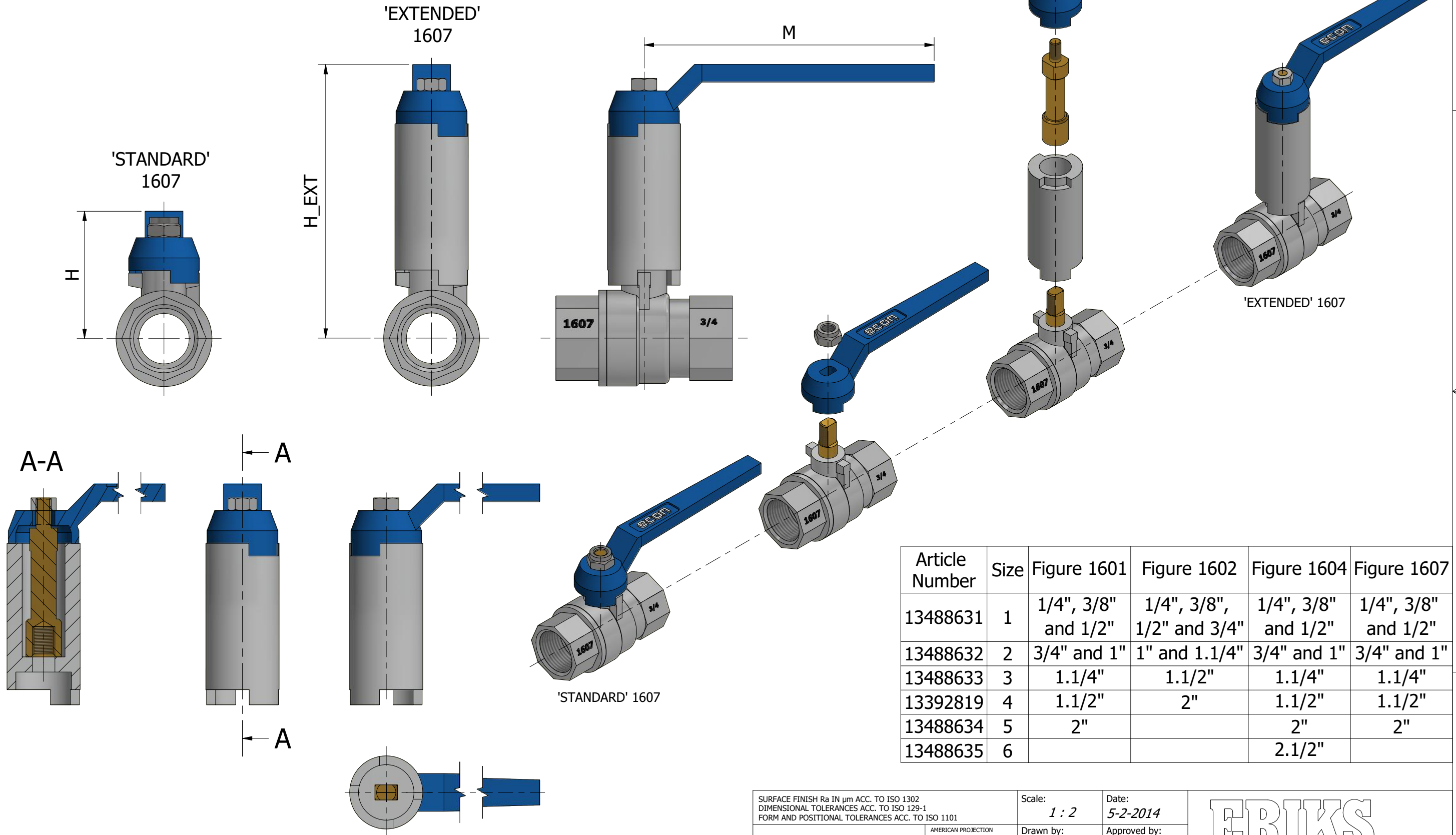


Dimensions 'H' & 'H_EXT'								
SIZE	1/4"	3/8"	1/2"	3/4"	1"	1.1/4"	1.1/2"	2"
H	38,5	38,5	41	50,5	54,5	66	72	88,5
H_EXT	100	100	102,5	113,5	117,5	130,5	136,5	153
M	80	80	95	115	115	130	150	170



Article Number	Size	Figure 1601	Figure 1602	Figure 1604	Figure 1607
13488631	1	1/4", 3/8" and 1/2"	1/4", 3/8", 1/2" and 3/4"	1/4", 3/8" and 1/2"	1/4", 3/8" and 1/2"
13488632	2	3/4" and 1"	1" and 1.1/4"	3/4" and 1"	3/4" and 1"
13488633	3	1.1/4"	1.1/2"	1.1/4"	1.1/4"
13392819	4	1.1/2"	2"	1.1/2"	1.1/2"
13488634	5	2"		2"	2"
13488635	6			2.1/2"	

TYPICAL DRAWING FOR ECON BALL VALVE FIG. 1607 & STEM EXTENSION;
EXTENSION IS ALSO SUITABLE FOR ECON BALL VALVES FIG. 1601, 1602, 1604.

SURFACE FINISH Ra IN µm ACC. TO ISO 1302 DIMENSIONAL TOLERANCES ACC. TO ISO 129-1 FORM AND POSITIONAL TOLERANCES ACC. TO ISO 1101		Scale: 1 : 2	Date: 5-2-2014	ERIKS WWW.ERIKS.COM
AMERICAN PROJECTION 		Drawn by: RW	Approved by: JL	
REVISION DATE: 04-10-2023 DESCR.: STEM EXTENSION 1607X		Figure No.: 1607X (STEM EXTENSION) FOR BALL VALVES FIGURE: 1601, 1602, 1604, 1607		Size: THR. BSP
				ECON Drawing No.: 1607-EXT
				REV.: B